

NEWSLETTER



Planting the Horticultural Seed in Our Youth

For over 30 years, Bucks Beautiful has worked hard to keep our county a beautiful and vibrant place to live, work and play. We have developed and implemented multiple beautification programs and projects across our many communities during this time. We have accomplished so much, and it doesn't stop here as we move into 2023.

My focus for this writing is to highlight one of our most rewarding endeavors which involves our youth. Since 2017, we have been developing and expanding a successful partnership with a number of local schools. We have been actively engaging our children in worthwhile and rewarding projects; visible projects that come to life which students can be proud of for years to come.

I thought it timely to share an update with you, our members and friends, on what we have completed to date.

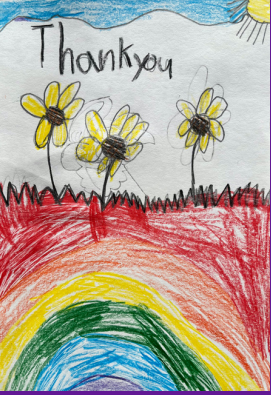
2017:

- At **Willow Dale Elementary** in Warminster, second grade students planted daffodil bulbs. This was not a "once and done." We were invited back to the school in 2022 to engage the next generation of students in the bulb planting. We hope this will become an annual tradition.
- Bucks Beautiful expanded our community garden support by sponsoring an outdoor multi-functional area at **Central Bucks West High School**. The inner courtyard garden designed by Indigenous Ingenuities' Matt Benzie created a peaceful native habitat both visually beautiful and functional as it serves as an outdoor classroom in the warmer weather.
- We partnered with Bowman's Wildlife Preserve and Hugh Marshall Landscaping to install a native garden at **New Hope-Solebury Middle School** to serve as a meeting area and outdoor classroom.
- **2018:** Bucks Beautiful planted 5,000 daffodil bulbs to embellish the entrance to **Groveland Elementary School**.

Continued...

**INSIDE
THIS
ISSUE:**

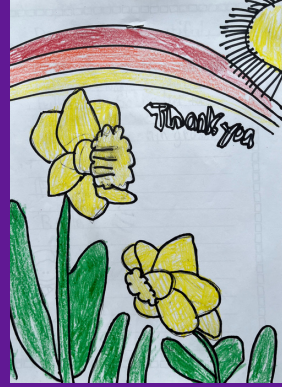
Community Involvement - 3
RePlant Bucks News -5
Business Member Spotlight - 7
The Path of Discovery - 8



2019: Bridge Valley Elementary in Furlong received an installation of 5,000 daffodil bulbs. A number of those were hand planted at the base of the school's flagpole by the classmates and family of Aum Kalanuria. Aum was just a first-grade student at the school at the time of his passing; now forever memorialized.

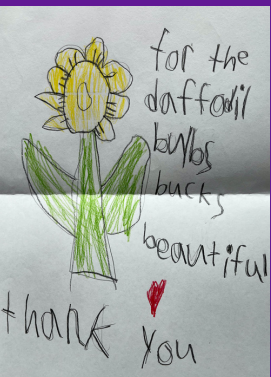
2021:

- At **Kutz Elementary School**, 9,500 daffodil bulbs were planted to memorialize Dominic Liples, a student at the school, who tragically lost his long and very public battle with brain cancer. This living tribute was expanded with an additional 500 bulbs that were hand planted by school staff, Dominic's friends and family members around the flagpole.
- **Jamison Elementary School** was our next stop. Here we helped sponsor the Renee Ford Sensory Garden in memory of a beloved staff member who had passed away. An inclusive, autistic support playground was created. This project enhanced the existing playground with sensory enriching features to fulfill the individual sensory needs of the students.



2022:

- In 2022, we returned to **Jamison Elementary School** with another grant to expand the Sensory Garden and to plant 5,000 daffodils along the entrance drive. Additional daffodils were donated for the students and staff to participate in planting in their Sensory Garden.
- Fifth grade students partnered with their third grade "buddies" to plant 250 bulbs to brighten the grounds of **Buckingham Elementary School**.



As we progress into 2023, Bucks Beautiful has begun the process of reviewing opportunities in collaboration with our schools-- educators, administrators and most importantly with the students. Together, our goal is to define new ways where beautification projects can be applied with a lens on learning. Our youth will become our future champions to continue to deliver on the Bucks Beautiful mission; we need to ensure that they are ready to step up to the challenge!

We hope that as you review these achievements, you will see the value in educating students in the importance of horticultural endeavors. This area of focus, combined with our other programs, expands and enriches our service to the community.

In conclusion, we encourage you to not only continue to contribute financially, but to continue your active participation. Without your support, we could not progress on this positive path into the future!

Thank you,

Gary Mathern
President, Board of Directors



Ways the Community Helps Bucks Beautiful Achieve Its Goals

By Kristen Kwiatkowski, Bucks Beautiful Member

Bucks Beautiful is a grass roots nonprofit that does so much to support the beautification of Bucks County. From planting lovely daffodils and sponsoring public gardens in various townships, to adding new trees to the landscape, the organization helps make Bucks a wonderful place to live.

The local community is also a large contributor with regard to making the goals of Bucks Beautiful possible. If you've wondered how you can lend a hand, there are several ways to help the organization thrive and continue doing important work.

Consider these options to pitch in, even from the comfort of your home:

Follow Bucks Beautiful on Social Media and Share Posts



Social media is an extremely valuable resource for nonprofits by allowing the opportunity to reach a large amount of people immediately. It's an effective tool to announce the latest happenings, such as events, recent plantings, and educational tips and resources. You can help spread awareness to the community by following Bucks Beautiful on Facebook, Instagram or Twitter, "liking" the social media posts, and sharing them to your own page or local groups. This type of assistance is easy to accomplish, only takes a few minutes and is free to do!

Become a Bucks Beautiful Member

If you have yet to become a Member, joining the organization is a wonderful way to show support – both financial and through endorsement. Members receive a wide array of perks:

- Free admission plus early access to the Kitchen & Garden Tour
- Discounted ticket to the Spring Fling event
- Bucks Beautiful supporter card and car magnet
- Discounts from select community partners
- Free advertising for Business Members

Best of all, your membership enables the organization to grow!



Join a Bucks Beautiful Committee

Serve on the Spring Fling or Kitchen and Garden Tour Committee to help ensure the success of these key fundraising events. As a committee member you'll aid in the planning and execution, thereby making these gatherings memorable and successful experiences for all.



Champion Bucks Beautiful by keeping the community looking great and helping the environment.

Care for Your Property's Landscape

By properly maintaining your lawn and gardens, you help to preserve the overall appeal of the county, which ensures that Bucks Beautiful's efforts continue to thrive. You can take steps to control invasive pests that may infest your trees and cause damage to your landscape and invade other areas. Additionally, you can incorporate native plants in your yard to ensure these plant species and pollinators flourish. Also, clean up trash and debris from your neighborhood, and ensure trash stays in respective waste receptacles to help keep Bucks County clean. Lastly, if you're looking for environmentally friendly ways to water your lawn and plants, consider adding a rain barrel to collect water to use for irrigation purposes.

Add Environmental Aspects to Your Business

Enhance your commercial property with an outdoor dining space, flowers, and foliage to create a welcoming and environmentally friendly area for your employees or clients. Consider adding rain gardens to manage stormwater. Shallow depressions in the yard can be filled with attractive wildflowers and native grasses to gather rainwater. This type of stormwater collection helps protect streams, rivers, and lakes from pollution.

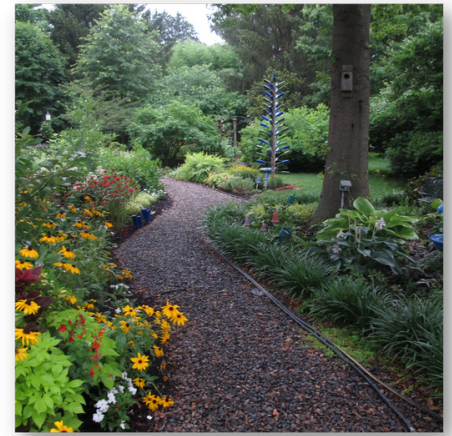
Join Your Local Shade Tree Commission or Garden Club

If you're eager to dig in with planting projects in your town, join your local Shade Tree Commission or Garden Club. Bucks Beautiful supports such groups who strive to enhance our community through matching grants, and encourage residents to take part in local beautification whenever possible.

Volunteer with Bucks Beautiful at Arbor Day or Earth Day Events

Promote Bucks Beautiful's mission at local one-day events by handing out pamphlets and sharing news of our initiatives.

Show support for Bucks Beautiful by lending a hand in one or more of these ways to help this wonderful organization achieve its many important goals!



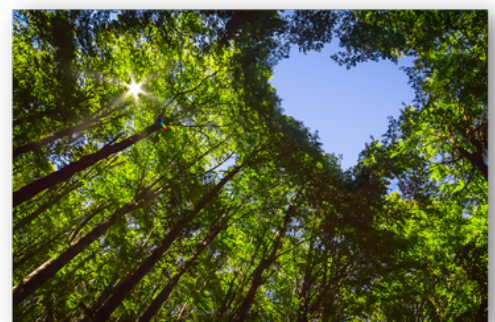
*Bucks Beautiful Member
Louise Silberg's Furlong property.*



*Courtyard at Carter van Dyke
Associates Doylestown office.*



*Menlo Park Memorial Garden
Sponsored by Perkasio Garden Club*





Branching Out

By Denise Sezack, Executive Director



Kids' Castle, Central Park

In memory of our former Executive Director, Dawn Byers, we donated three trees to create a shady grove surrounding the bench dedicated to her at Kids' Castle. Dawn was instrumental in spearheading the popular playground. Doylestown Township Parks Superintendent Chris Mason and his crew did a fantastic job creating a place of solitude and reflection in honor of Dawn.



Bucks County SPCA, Quakertown

With ongoing support of community partners such as the Charitable Giving Foundation of Penn Community Bank, we were excited to help the BCSPCA enhance the quality of life for the animals at the Upper Bucks shelter site. In late November we coordinated with Gale Nurseries Inc. to plant 12 trees to provide a healthy environment and shade the rescued animals from the heat as they rehabilitate. The varieties installed were Red Sunset Maple, Pine Oak and Black Gum.



Fonthill Castle

The memorial garden has been officially approved for the famed acres of Fonthill Castle. The inaugural trees were installed by Bucks Country Gardens in memory of Ed Krensel, Donald Page and James Peruto. Bucks Beautiful supporters purchased the trees through our RePlant Bucks program as a living tribute to their loved ones.



The Tileworks of Bucks County

In collaboration with Feeney's Wholesale Nursery and Gale Nurseries Inc., we planted 19 trees on the historic grounds of The Tile Works of Bucks County in early January. They will recreate the vision Henry Mercer had for the entrance to The Tile Works and Fonthill Castle, in Doylestown.



**BARTLETT
TREE EXPERTS**

SCIENTIFIC TREE CARE SINCE 1907

One of Bucks Beautiful's newest Business Members aligns with our mission like a hand fits a glove. Kevin Juchno is an arborist with Bartlett Tree Service. In his desire to contribute to the local community, he reached out to Bucks Beautiful and said, "How do I get involved?"

Who is Bartlett Tree Experts? They are a 100+ location firm started by Francis Bartlett in 1907. They have had a presence in Bucks County for 30 years. Kevin Juchno, an Arborist Representative, is a Bucks County native, graduating from Pennsbury High School in 2009.

The firm's mission can be summed up in three words: Conservation, Preservation and Longevity. Put another way, Kevin sees his role as "keeping trees alive." Bartlett is a full scale tree service company. They can prune trees, diagnose them and advise on what steps you need to take to keep your trees healthy.

Kevin explained their clients are "people who care about trees and the landscape." Homeowners make up about 85% of Bartlett's local customer base. They also have the capability to undertake commercial and municipal projects. If a homeowner notices changes in a tree that cause concern, Bartlett will visit for a free consultation. If the problem is serious, they can perform a tree risk assessment. Some trees need to come down to avoid the greater risk of damage to persons or property. Put another way, Kevin Juchno is a tree doctor.

Through Bartlett Tree Experts, Kevin is involved in the local community. He and his firm participate in community education programs at Earth Day events, including planting saplings within Bucks County.

If you have questions about your trees, Kevin Juchno can be reached by calling 215-249-1819 or by e-mail at kjuchno@Bartlett.com.

www.bartlett.com



Kevin Juchno, Arborist



Leading Me Down the Path of Discovery

by Melissa Palmer

It all began with the thrift store purchase of a gorgeous floral tie. The flowers were on a black background of silk, and the tag on the back of the tie read “Mary Delany and her Flowers 1700-1780.” This peaked my interest so I immediately “Googled” Mary Delany -to my surprise she was a fascinating person!

Mary Granville was married at a very young age to a much older man, which by her account was miserable. After he died she married Dr. Delany for love in her 40’s. She knew many famous people of her time such as Handel, and is said to have taken lessons from him. Mary corresponded with Swift, was wooed by John Wesley, entertained by Garrick and saw much of Lord Chesterfield. Her closest companion was the Duchess of Portland, who owned the famed Portland Vase that now resides in the British Museum (that is a whole other story in itself- please look it up if interested). The Duchess put her in contact with some of the greatest botanist, horticulturalist and botanical artists of the time including Sir Joseph Banks, Solander, Lightfoot, Fothergill, Philip Miller and Ehret.

Mary’s contacts with the art world were extensive as well. She knew Hogarth (famous for the Hogarth Curve) and may have had drawing lessons from him, as well as painting lessons from Goupy. Sir Joshua Reynolds praised her for her flower collages of paper – “mosaicks.”

At the age of eight she was noticed by her teachers to have a wonderful talent in cutting paper into lovely shapes, such as tiny birds, and making lovely pictures out of them.



Mary Delany (née Granville), print from an original painting by John Opie.



Mary was also an avid botanist and at age 72, combined her interests to invent a form of paper-cutting or decoupage, or “paper mosaicks” as she referred to them. It was a brand-new artform entirely resulting from her skills and experience.

These beautifully intricate pieces of art were created out of paper and building of hues by placing paper on top of paper to create the feeling of depth and light. You must remember that in the eighteenth-century paper was made entirely by hand. She mostly painted large sheets of “rag” paper with watercolor, let them dry and then cut from them the hundreds of pieces needed to reproduce the flower she was portraying. .

Exquisitely beautiful, Delany's work was also valued for its scientific accuracy. Every collage is labeled with the plant's Linnaean and common names, the name of the specimen's donor, and a collection number.

She created nearly one thousand botanical masterpieces by 1784, when failing eyesight going into her 80th year compelled her to stop.

Mary was renowned later in life. Therefore, it's wonderful to know that you are never too old to start an adventure, or even become famous!

The majority of Mary Delany's vast Botanical Mosaics collection reside in the British Museum. Her work can also be seen in The Royal Collection, the National Gallery of Ireland, Dublin and the Lilly Library, Indiana University, Bloomington, USA.

Further reading:

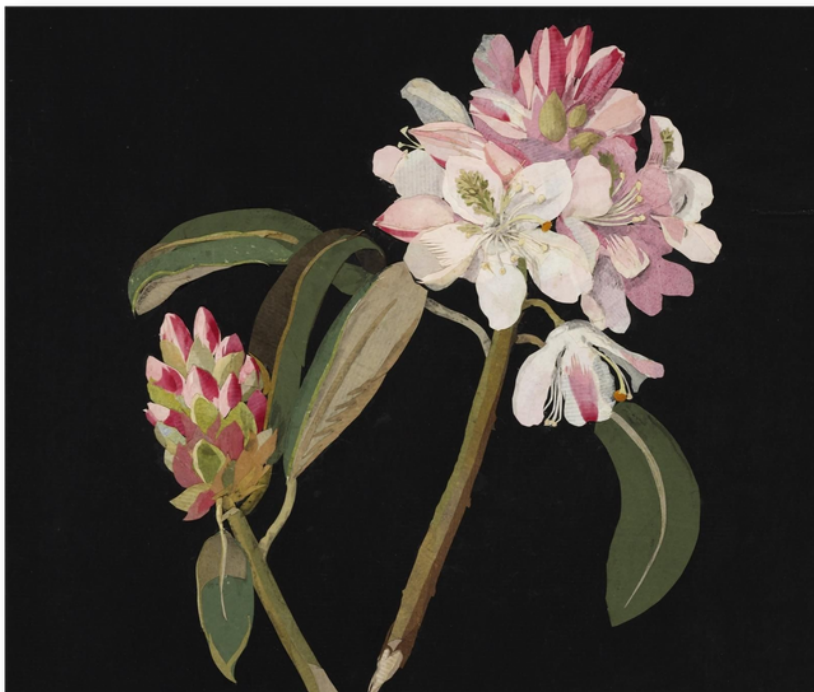
Hayden, R. (1980) Mrs Delany her life and her flowers.

The British Museum.

ISBN: 0-7141-8022-X



CHINESE HOLLYHOCK
MARY DELANY, THE BRITISH MUSEUM



RHODODENDROM MAXIMUM 1778
MARY DELANY, THE BRITISH MUSEUM



ROSA GALLICA 1782
MARY DELANY, THE BRITISH MUSEUM



"We are firm believers in supporting the community who supports us. A number of years back, we started a Holiday Donation Campaign to raise funds for local nonprofit organizations based in our community. We've kept the tradition going, adding a company match, and through the years we've allowed our employees to pick favorite nonprofits as well as choosing off feedback from our customers.

Past recipients include BCHS Fonthill, Heritage Conservatory, World Hunger, Meals on Wheels, Penn State Arboretum, Doylestown Hospital, CBCC Business Cares, Pennridge Fish, and many others in our community.

This year we decided to select three nonprofits that have a direct impact on Bucks County and are located in the Central Bucks area. Bucks Beautiful, Bucks County Housing Group Food Pantry and Tabor Children Services were selected to each receive one third of our annual Holiday Donation Match Campaign.

Once again, our customers demonstrated their generosity and support for our local nonprofit community by contributing \$3980. With our donation match, each nonprofit will receive \$2653. We are blessed to have the most loyal, caring and appreciative customers. We're just a small business, but together, we can make a big difference."

- Tom, Greg and Ryan Hebel, Bucks Country Gardens



Save the Date for our **SPRING FLING** Friday April 21, 2023
An evening of rustic elegance at the Inn at Barley Sheaf

Event Sponsorships Available * Auction Donations Welcome

Email info@bucksbeautiful.org to participate



KITCHEN & GARDEN TOUR

Sunday June 11, 2023 - 11am-4pm, Rain or Shine

President
Gary Mathern

Vice President
Michael E. Peters, Esq.

Treasurer
Michael J. Stumpf

Board of Directors

Matthew Broad

Pam Byers

Gerard Caronello

Jeanne Connelly

Steve Darlington

Melissa Eiseman

Mike Feeney

David Fermier

Peter R. Fernandez

Chuck Gale

Dr. Vail Garvin

Thomas L. Hebel

John F. McCaughan

Renny Reynolds

Bryce Sanders

Susan Sandor

Jonathan Sharaf

Carter van Dyke

Executive Director

Denise Sezack

Financial Director

Susan Carr

Communications Director

Laurie To

Community Engagement Manager

Jennifer Finelli

Founders & Benefactors

Robert L. & Joyce Byers

Founding Major Patrons

Byers' Choice Ltd.

John F. & Carol McCaughan

